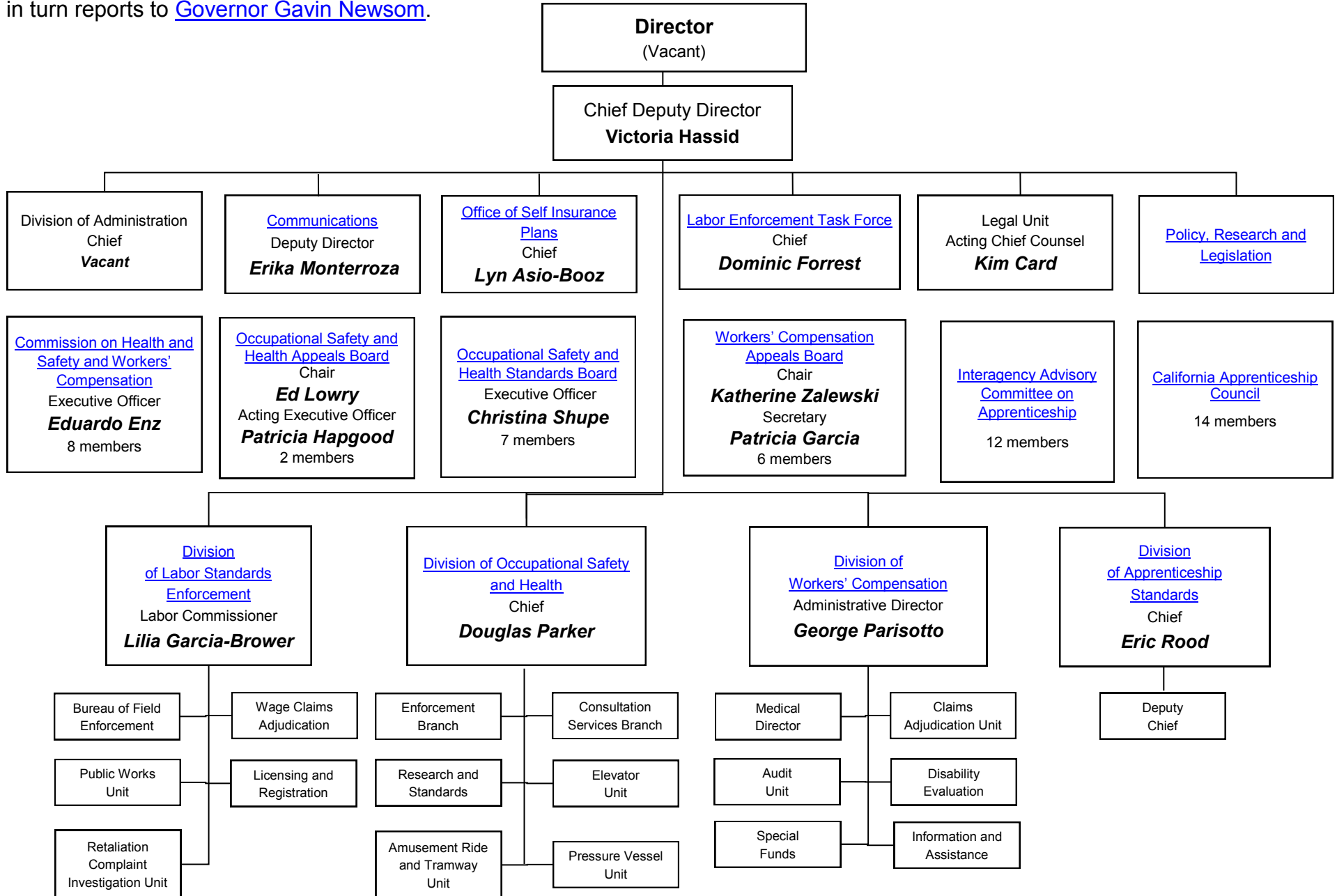


# Department of Industrial Relations

The Department of Industrial Relations Director reports to [California Labor & Workforce Development Agency](#) Secretary Julie Su who in turn reports to [Governor Gavin Newsom](#).



[Industrial Welfare Commission](#) is currently not in operation. The [Division of Labor Standards Enforcement](#) enforces wage order provisions.