

DAS Data Insights

2025 Year End Data

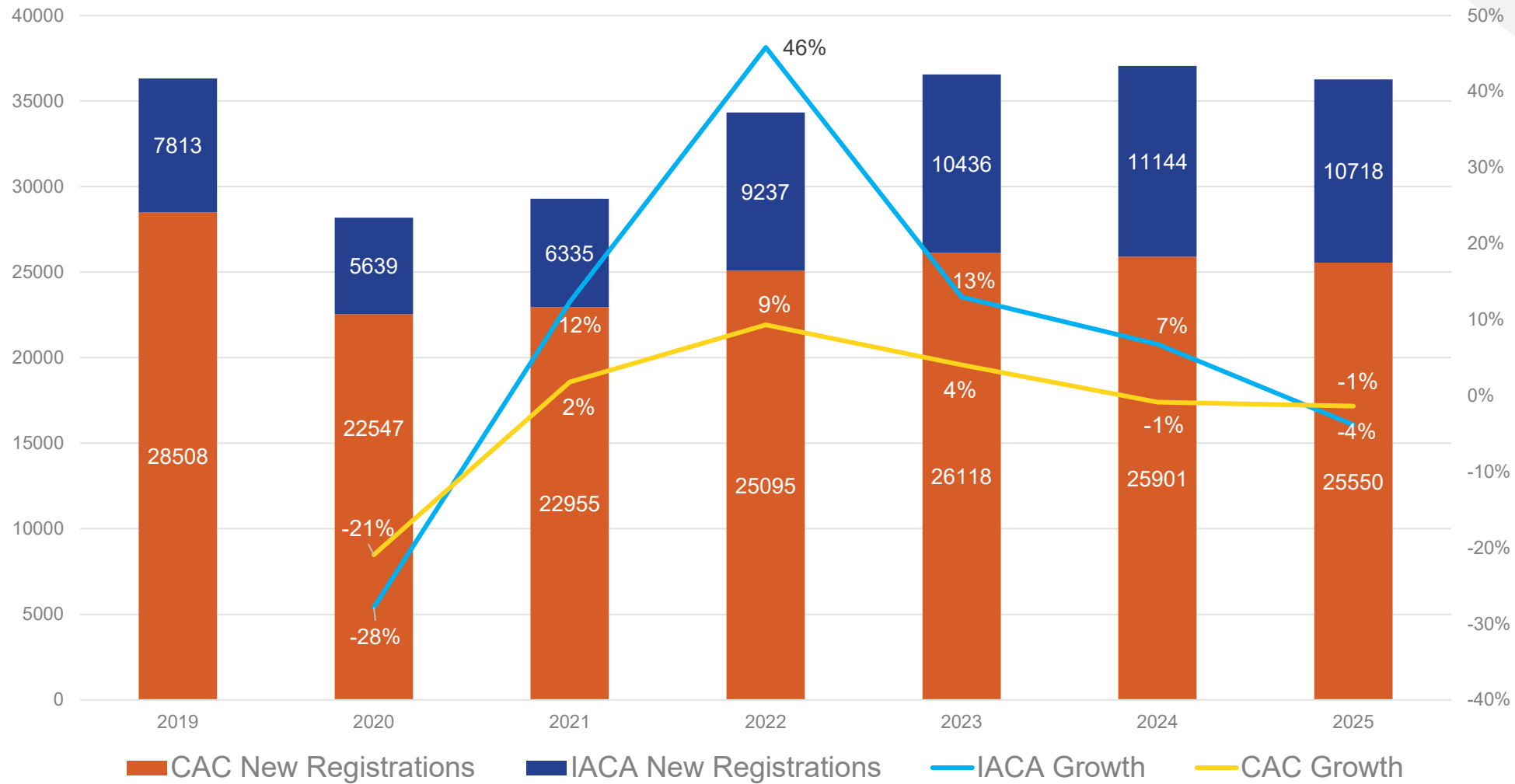
IACA 2026-04 Presentation

DIVISION OF
APPRENTICESHIP STANDARDS

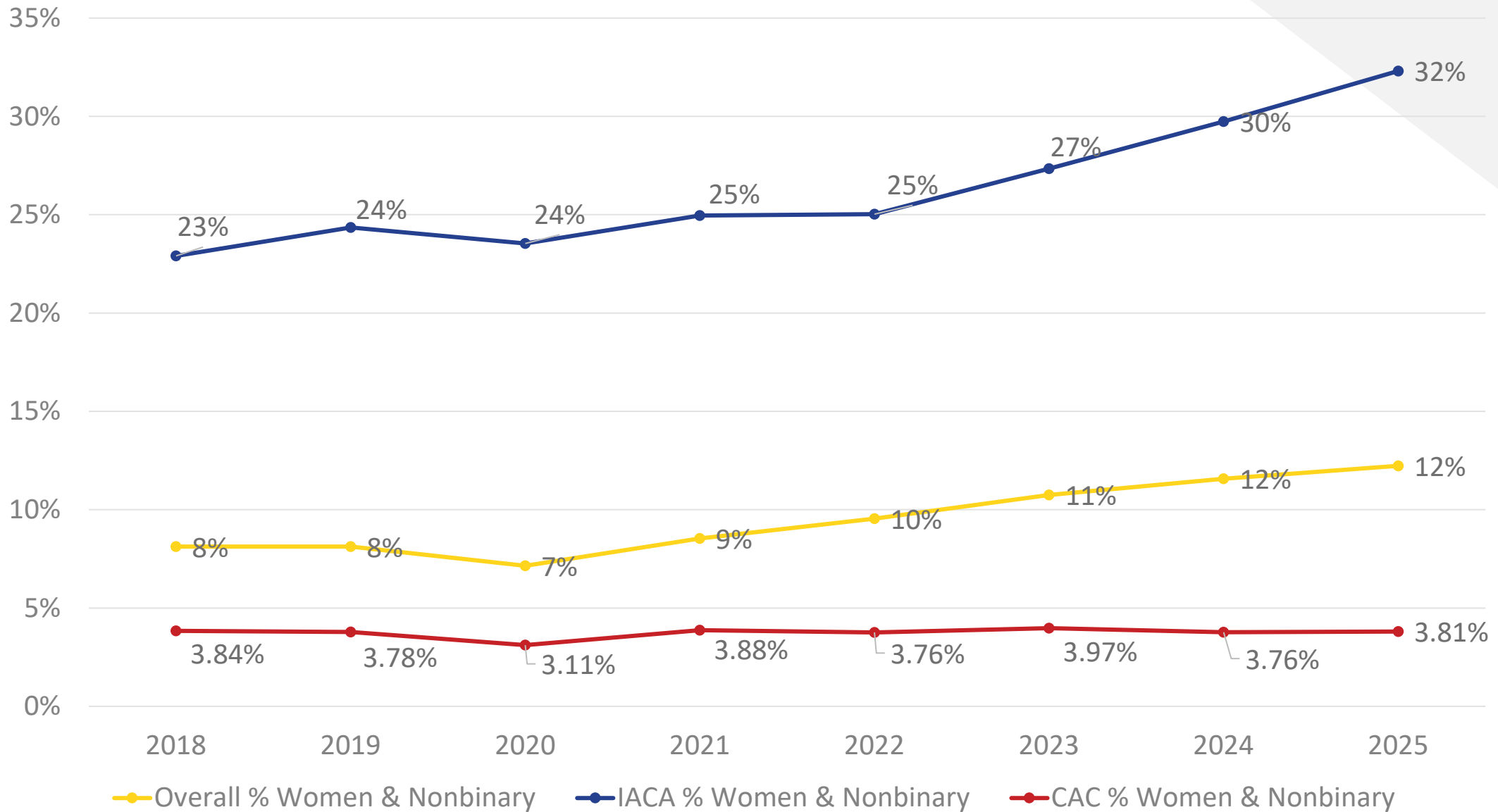
DAS

STATE OF CALIFORNIA
DEPARTMENT OF INDUSTRIAL RELATIONS

New Registrations



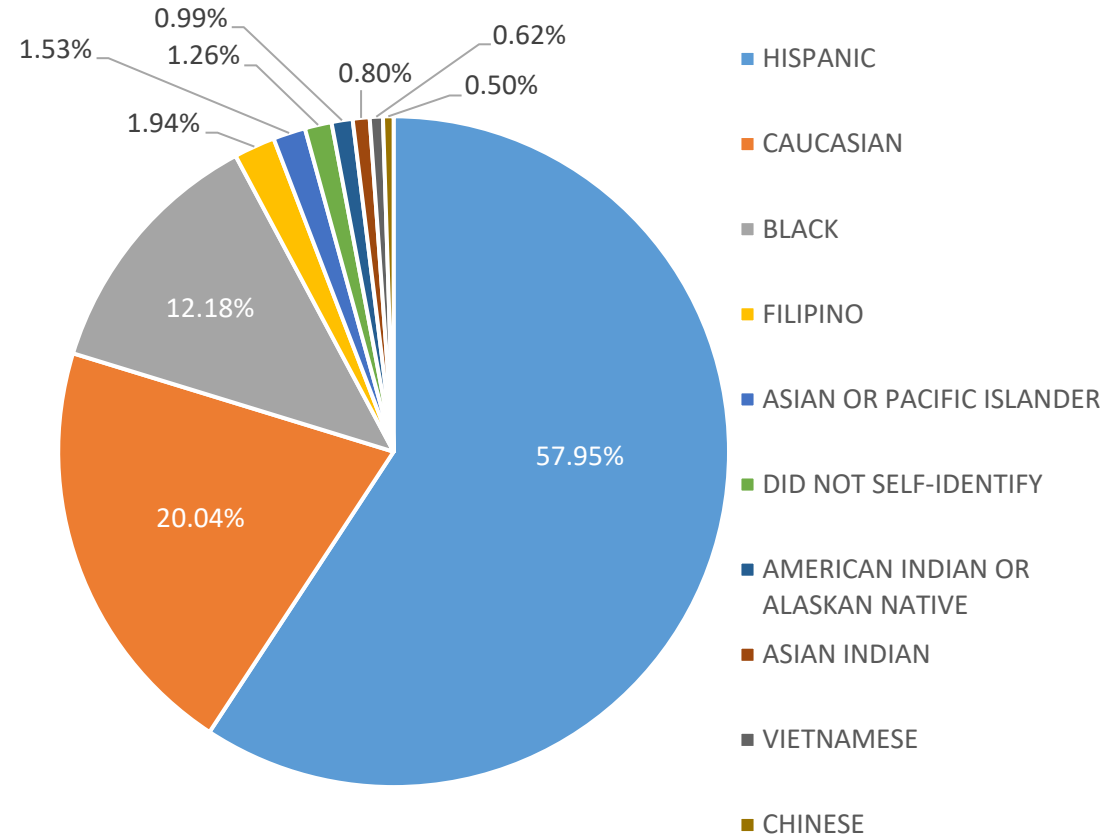
% Women & Nonbinary of New Apprentices



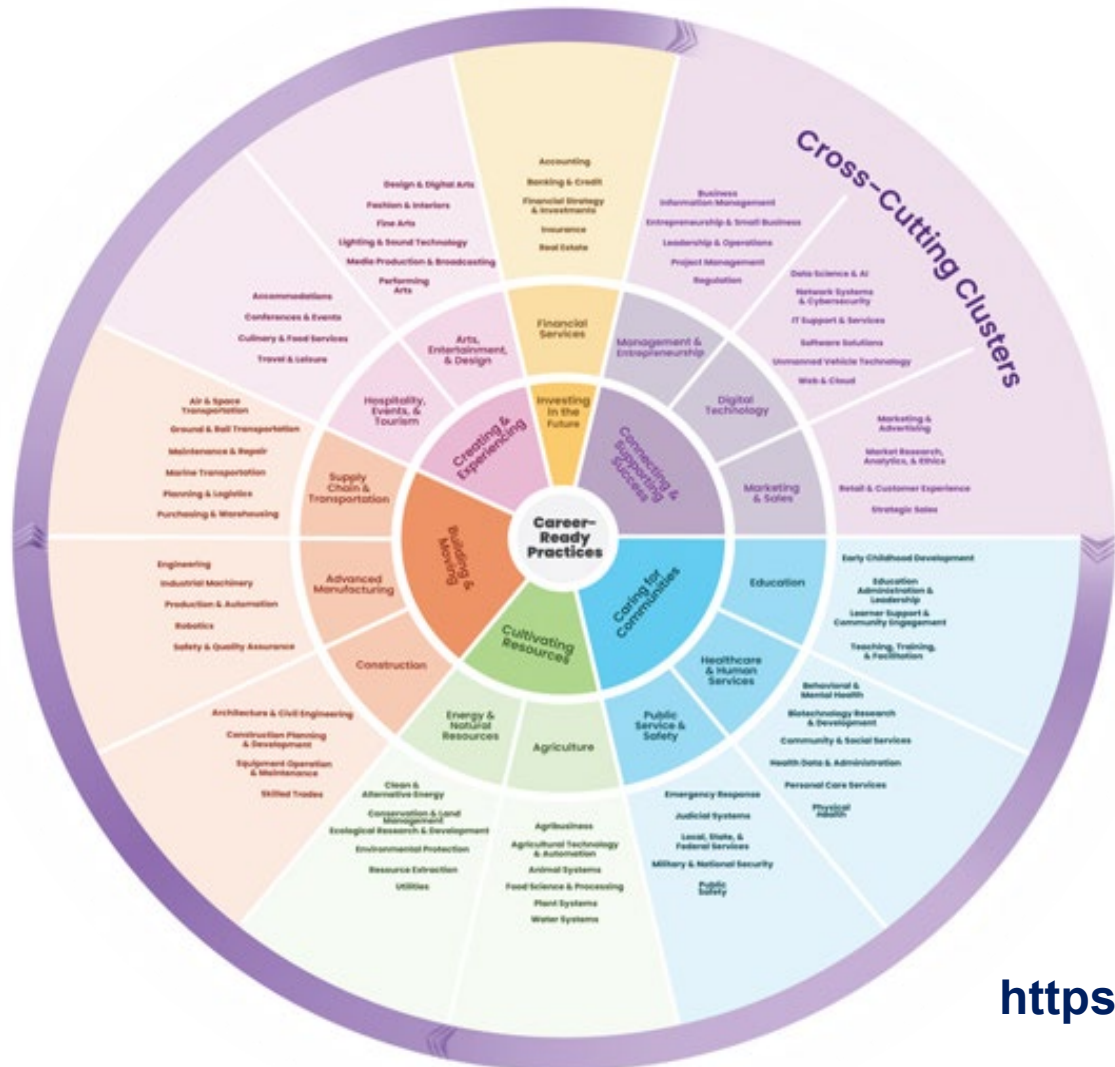
IACA 2025 New Registrations-Ethnicity

ETHNICITY- New Registrations	% of new registrations
HISPANIC	57.95%
CAUCASIAN	20.04%
BLACK	12.18%
FILIPINO	1.94%
ASIAN OR PACIFIC ISLANDER	1.53%
DID NOT SELF-IDENTIFY	1.26%
AMERICAN INDIAN OR ALASKAN NATIVE	0.99%
ASIAN INDIAN	0.80%
VIETNAMESE	0.62%
CHINESE	0.50%
HMONG	0.41%
KOREAN	0.35%
HAWAIIAN	0.22%
CAMBODIAN	0.22%
PAKISTANI	0.21%
JAPANESE	0.14%
LAOTIAN	0.11%
TAIWANESE	0.07%
BANGLADESHI	0.07%
INDONESIAN	0.07%
SAMOAN	0.07%
TONGAN	0.07%
FIJIAN	0.06%
GUAMANIAN	0.06%
UNKNOWN	0.05%
THAI	0.04%

Top 10 Ethnicities



Advance CTE Career Cluster Framework



- Career Clusters provide a standardized framework for workforce classification
- Clusters occupations by their functional area and NOT context of employment.
- We are working on integrating career clusters into our data framework

<https://careertech.org/career-clusters>

Completions Calculation

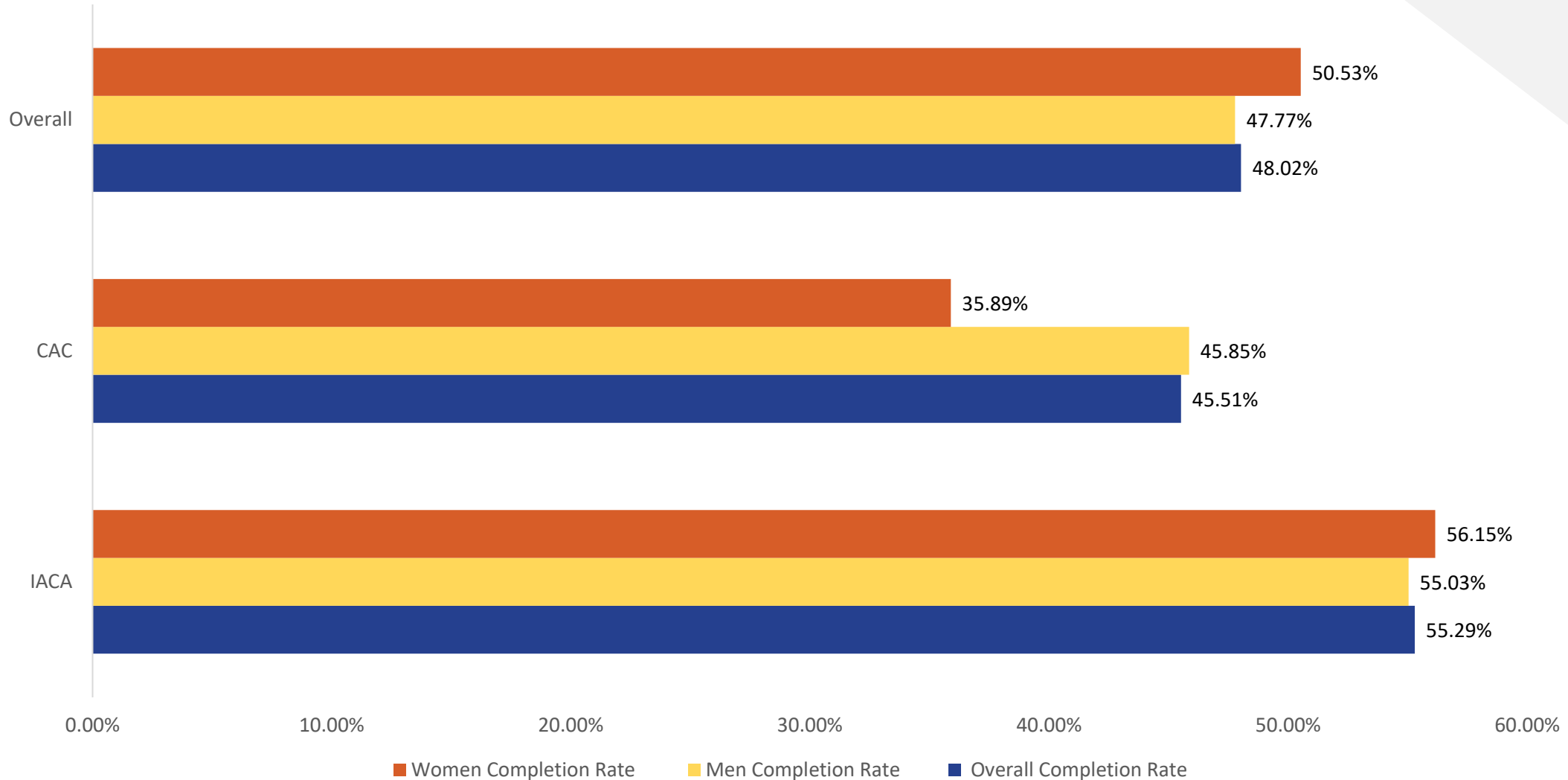
When determining the completion rate:

- The denominator is the number of registrations where the year of the Completion Date is the Report Year. This means that the apprentices had an expected completion year of the Report Year.
- The numerator is the number of registrations from the denominator that have a status of 'completed'
- The format is XX.X% (1 decimal place)
- At year end the annual and 5-year Avg completion data is calculated and published

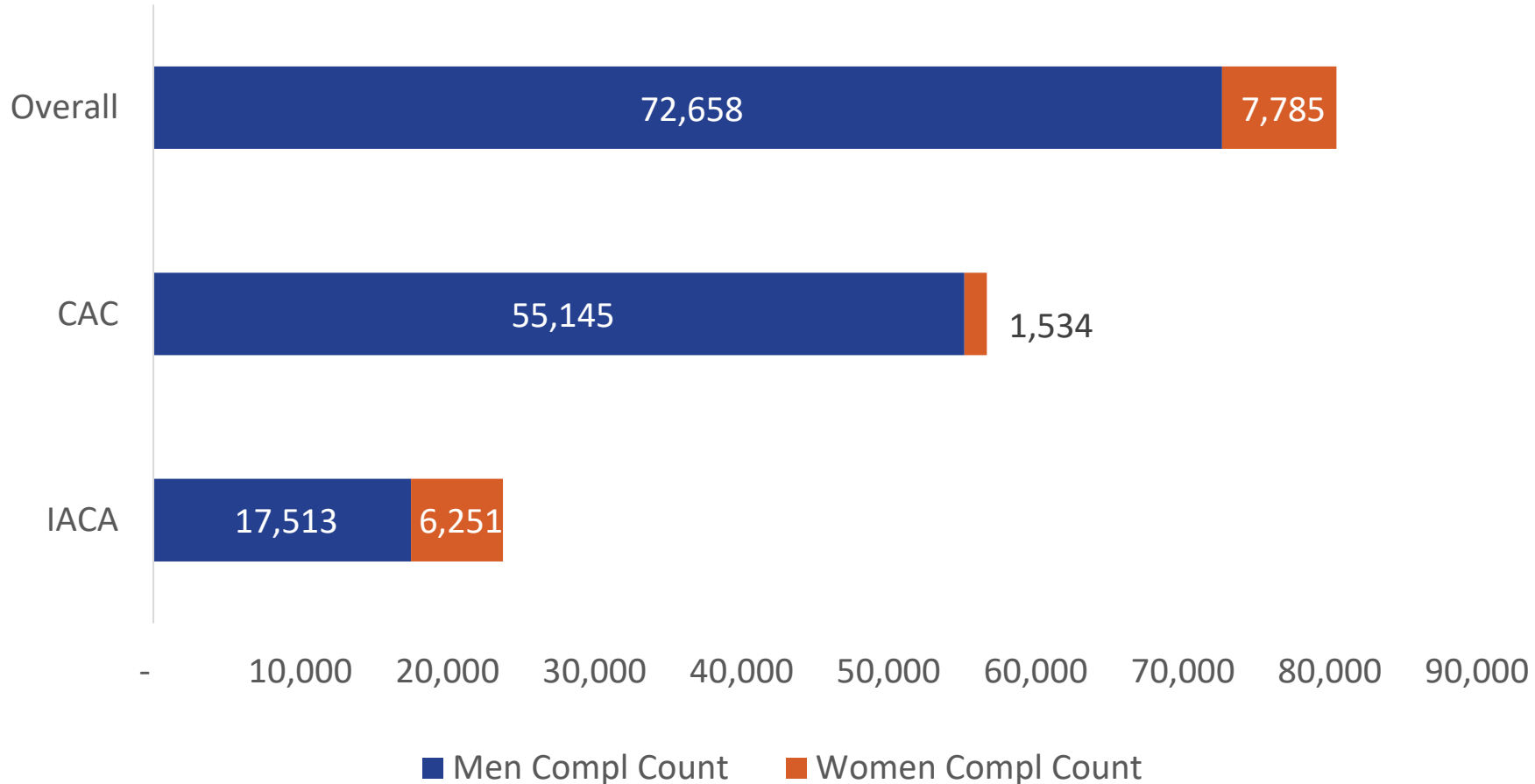


5 Year Apprenticeship Completion Rates

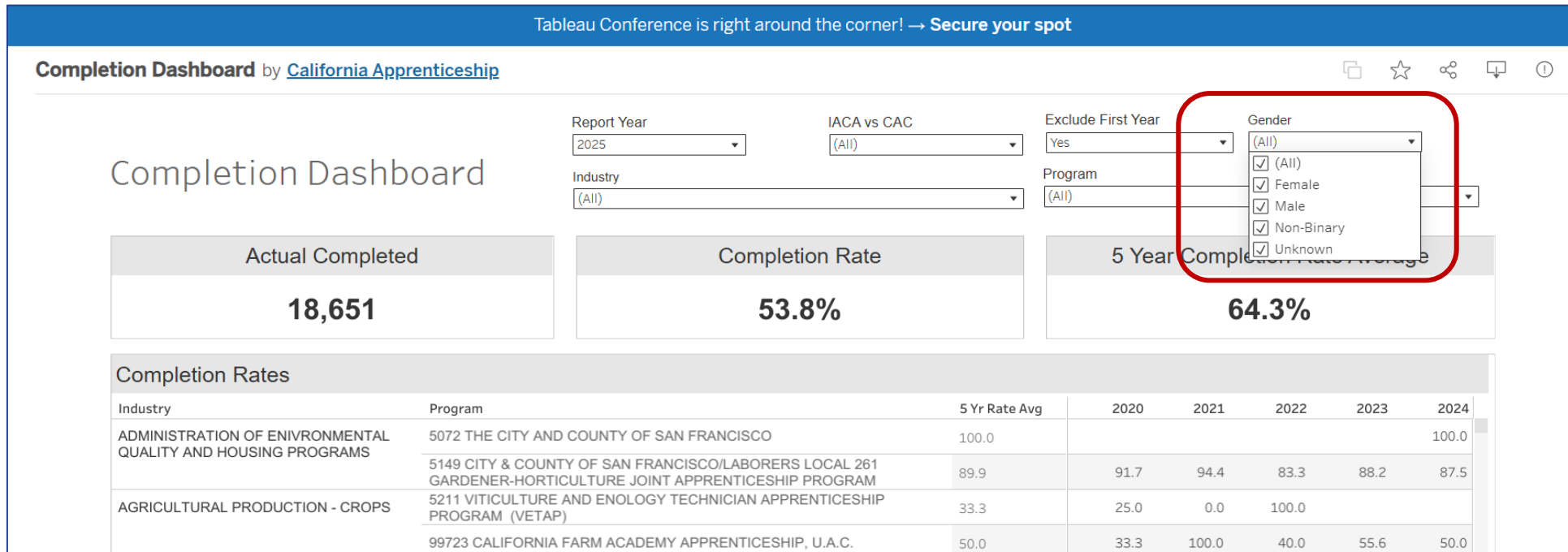
With first year cancellation included



5 Year Apprenticeship Completion Count



DAS Tableau Completions Dashboard



Thank you!

