

SASH

Monique A. Hosein, DrPH

Coordinator of Public Programs
Labor Occupational Health Program
School of Public Health
University of California, Berkeley



State of California
Department of
Industrial Relations



State of California
Gavin Newsom
Governor

School Action for Safety & Health

Schools are workplaces too!
School employees are more likely to get injured on the job than the average California worker.



United for Safety

It takes everyone, working together, to create a safe workplace!

The government requires:

1. Look for hazards in your job and work with others to identify solutions that will protect for you.
Go to www.dir.ca.gov/CHSWC/SASH to find tips and solutions to address common hazards.
2. Report hazards to your district or school's safety coordinator or to your supervisor. Share your ideas for solutions.
Remember, you have a right to a safe workplace.

_____ at your school. Please _____

_____ at your district. Please _____

www.dir.ca.gov/CHSWC/SASH

The School Action For Safety and Health (SASH) Program
Preventing Safe and Healthy Workplaces for California's School Employees
Cooperation on Health and Safety and Workers' Compensation (CHSWC), California Department of Industrial Relations

Non-fatal occupational injuries and illnesses are twice as high among school-based workers in California (2023 BLS) as those among workers in private industry



The rate of injuries and illnesses
across industries
3.5 per 100 FTE equivalent

But the rate of injuries and illnesses in
schools was **6.9 per 100 FTE
equivalent**

SASH was established in 2010 to:

- **reduce job-related injuries and illnesses** among California workers, and
- help schools **comply with the Injury and Illness Prevention Program (IIPP) standard.**

Administered by the [Commission on Health and Safety and Workers' Compensation](#) in the Department of Industrial Relations, through interagency agreements with two University of California centers


Labor Occupational Health Program University of California, Berkeley


LOHP Safe Jobs.
Healthy Lives.

LABOR OCCUPATIONAL HEALTH PROGRAM
UNIVERSITY OF CALIFORNIA, BERKELEY

[f](#) [@](#) [in](#) [t](#)

[HOME](#) [ABOUT](#) [OUR WORK](#) [UPCOMING TRAININGS](#) [MATERIALS & RESOURCES](#) [NEWS](#) [CONTACT US](#) [DONATE](#) [Q](#)






The Perfect Storm:

How Supervisors Get Away with Sexually Harassing Workers Who Work Alone at Night

<https://lohp.berkeley.edu> enzain, and Karen Andrews
ogram — University of California, Berkeley

Policy Analysis



Labor Occupational Safety & Health Program University of California, Los Angeles



UCLA Labor Occupational
Safety & Health Program

ABOUT US | OUR WORK | REGISTRATION | RESEARCH AND POLICY | RESOURCES | NEWS & MEDIA | CONTACT US

PROTECTING WORKERS FROM EXTREME HEAT (INDIGENOUS LANGUAGES)

Four short worker health and safety video clips were produced in six Indigenous languages. Each video clip focuses on one of four messages from the Cal/OSHA Heat Illness Prevention Standard, all of which are required California workplace provisions.

LEARN MORE

SASH Program structure



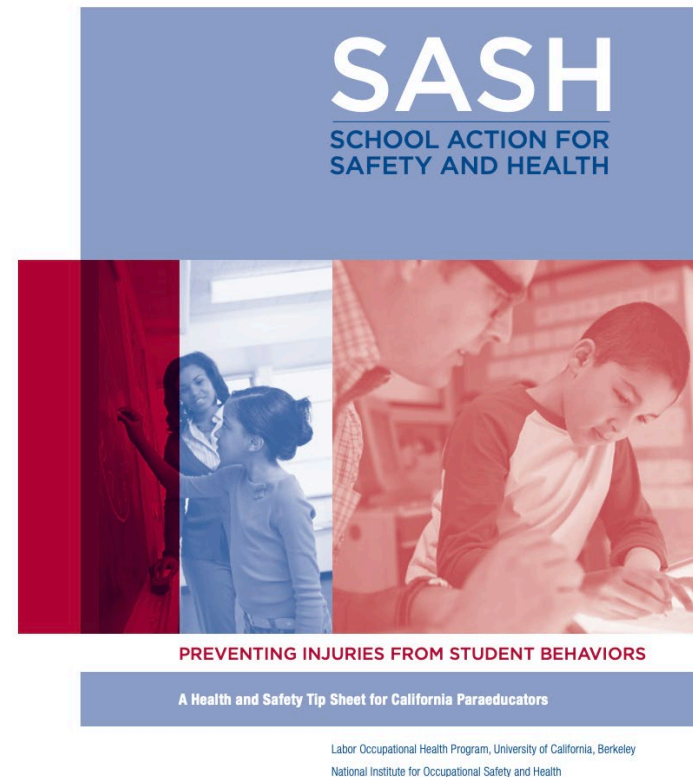
- Main focus is helping school districts to comply with the Cal/OSHA IIPP standard
- Webinars
- Occupation-specific workshops
- Special projects

SASH IIPP Training

Trains safety coordinators with an understanding of underlying causes of workplace injuries and tools to **develop a comprehensive health and safety plan** in compliance with Cal/OSHA IIPP standard.

Occupation Specific Workshops

A 1.5 hour in-person workshop for paraeducators and others affected by potentially harmful student behaviors, based on the tipsheet **Preventing Injuries from Student Behaviors**



Please contact us!

LOHP presents
**Preventing Injuries from
Student Behaviors:**
—
**A Health and Safety Training for
Paraeducators**

Paraeducators play an essential role in supporting teachers and school administrators in meeting the educational needs of students with disabilities. Sometimes these students might display physically aggressive and potentially dangerous behaviors, even though there may be no intention to cause harm. We offer a free 1.5 hour workshop on preventing injuries from student behaviors for paraeducators, behavior interventionists and other educators. The workshop is based on the material in the factsheet "Preventing Injuries from Student Behaviors" and will focus on prevention, preparation and response to potentially harmful behavior by students.



**If you are interested in hosting this free
professional development opportunity**
Please email Yasin at yasin_khan@berkeley.edu
or sign up for our interest list!

© 2024 State of California DIR Commission on Health and Safety and Workers' Compensation. This training is a program of the School Action for Safety and Health (SASH) Program administered by the Commission on Health and Safety and Workers' Compensation in the Department of Industrial Relations through inter-agency agreements with the Labor Occupational Health Program at the University of California, Berkeley, the Western Center for Agricultural Health and Safety at the University of California, Davis, and the Labor Occupational Safety and Health Program at the University of California, Los Angeles. Learn more about WOSHTEP at dir.ca.gov/ohave/woshtep. Photo credit to CDC on Unsplash



Yasin Khan
yasin_khan@berkeley.edu



Jon Salazar
JSalazar@irle.ucla.edu

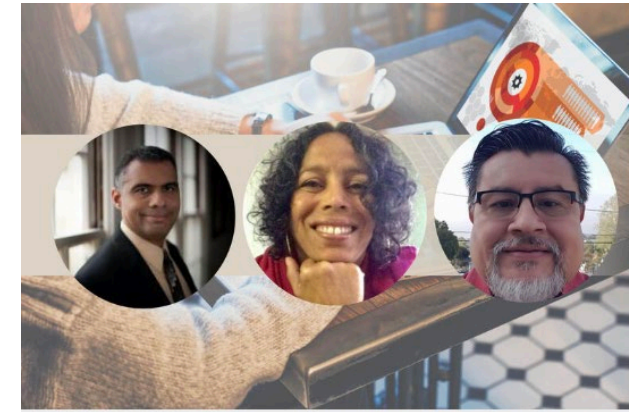
Webinars



06/05/2024: What Does It Take to Prevent and Address Workplace Violence?



08/07/2024: Keeping Cool at School: Addressing Indoor and Outdoor Heat Standards to Protect Workers



05/07/2025: An Occupational Safety and Health Approach to Injuries Caused By Student Behaviors

Resources

Factsheets

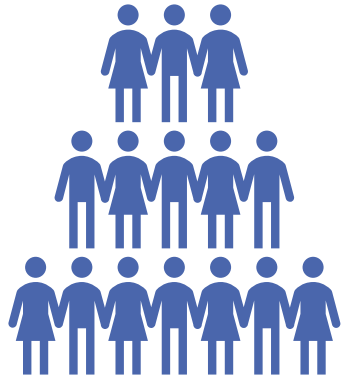
Tipsheets

Webinars

Expertise



SASH has trained over...



2,500 SASH Coordinators
across...



44 of California's 58
counties

More than academic partners





We cultivate meaningful partnerships

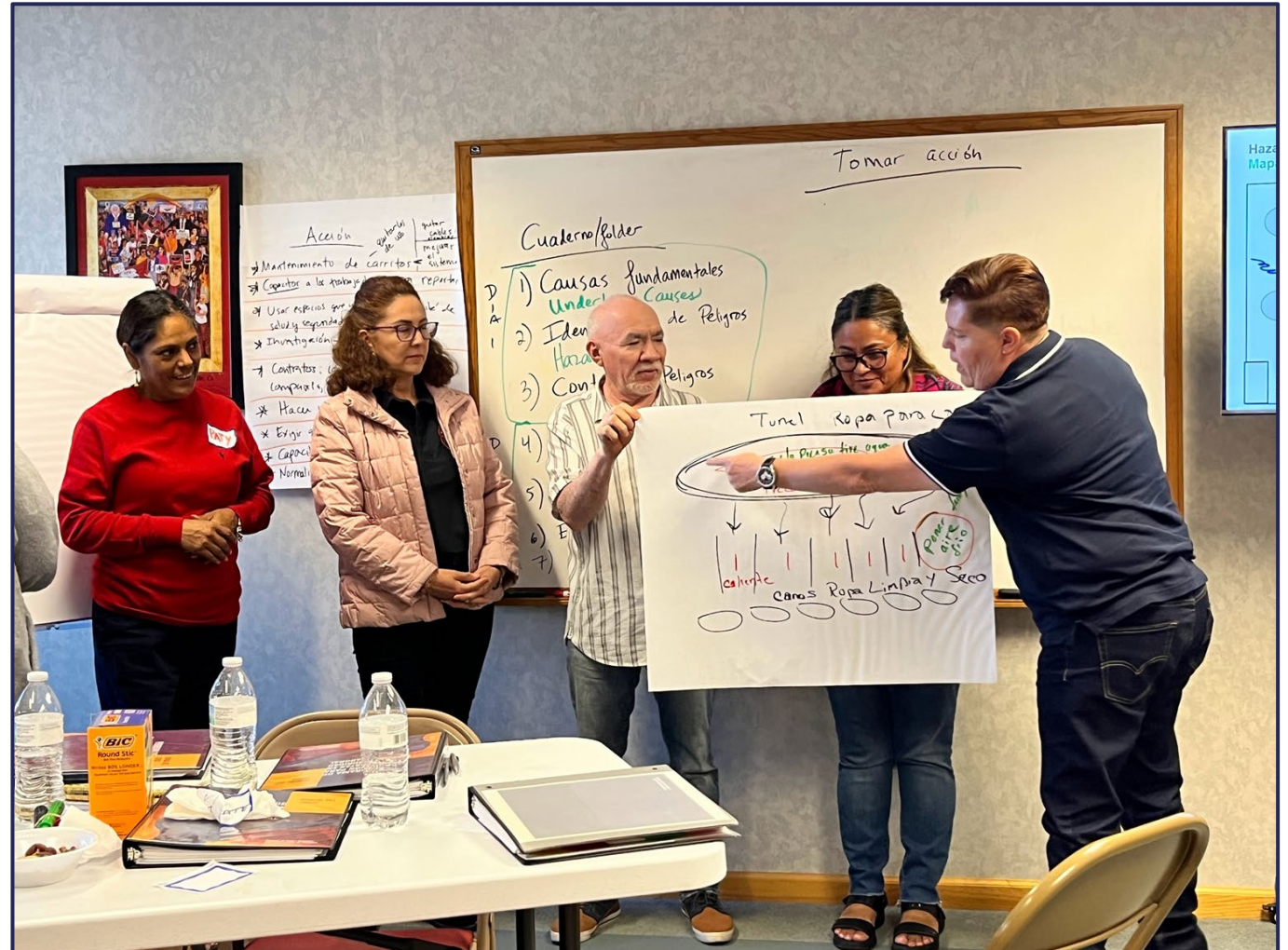
We center the expertise of workers in interactive trainings



**We help schools
to provide safe
working
conditions**



We are experts in facilitating adult learning



We are experts in curriculum development



**We bring
deep
community
ties and
expertise to
the vision
of...**



**...safe and just workplaces from
which each worker returns home in
the same condition in which they
arrived**

Q & A

monique_hosein@berkeley.edu

