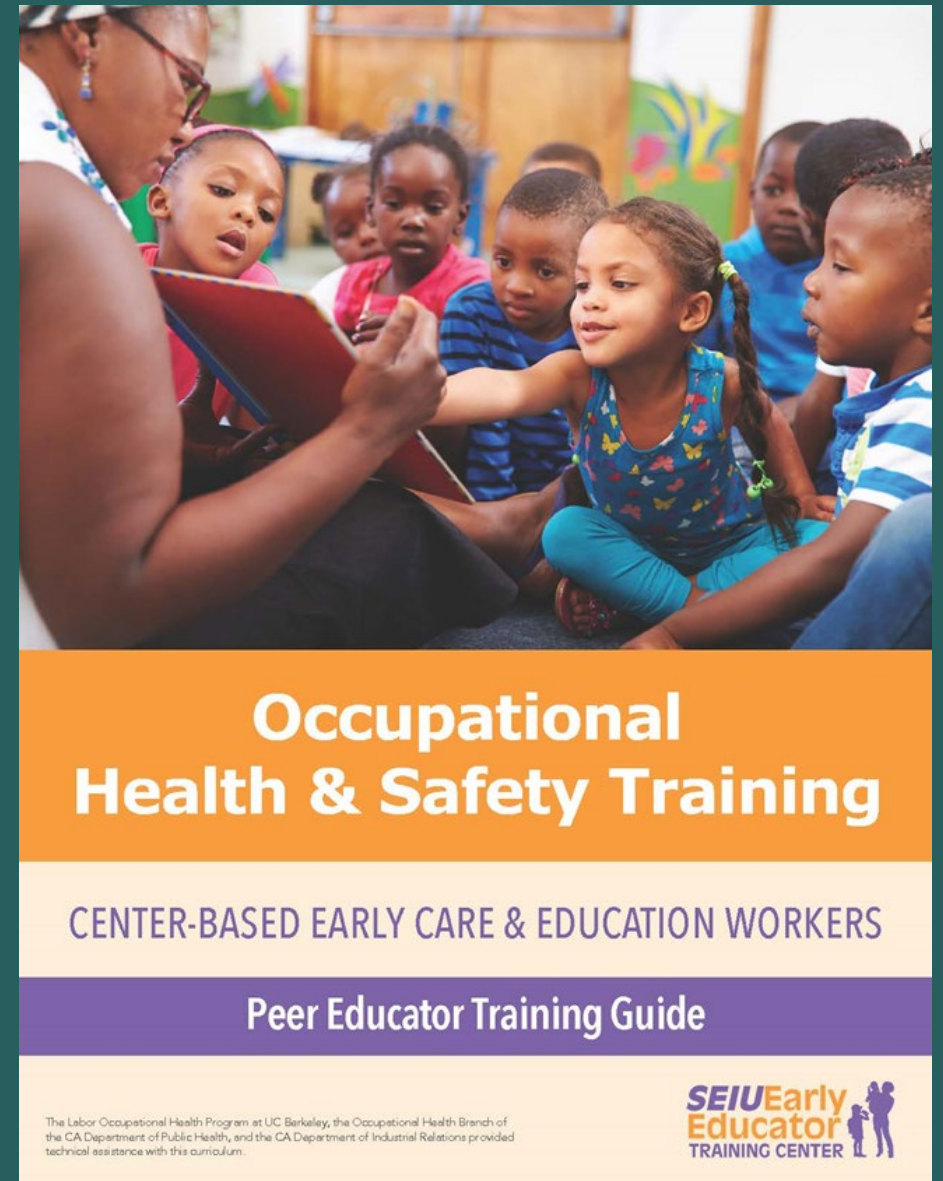


# Childcare Occupational Safety and Health Model Training

CHARLOTTE CHANG, MPH, DRPH

LABOR OCCUPATIONAL HEALTH PROGRAM, UC BERKELEY

JAN. 31, 2020



# Background

- ▶ Over 100,000 childcare workers in CA
  - ▶ Centers, preschools, public schools, private homes
  - ▶ Demand increasing
  - ▶ Predominantly female, workers of color, and many are foreign-born
- ▶ Range of tasks
  - ▶ Supervising & monitoring children, meal prep, hygiene, diapering, organizing learning & developmental activities, communicating with parents
- ▶ Hazards
  - ▶ Heavy lifting & ergonomic hazards
  - ▶ Chemicals
  - ▶ Blood borne pathogens
  - ▶ Stress

# 2018-2019

The logo for the Labor Occupational Health Program (LOHP) features the letters "LOHP" in a bold, dark teal, sans-serif font. The letters are centered within a white rectangular box.

LOHP

LABOR OCCUPATIONAL HEALTH PROGRAM  
UNIVERSITY OF CALIFORNIA, BERKELEY

The logo for the SEIU Early Educator Training Center features the text "SEIU Early Educator" in a bold, sans-serif font. "SEIU" is in purple, "Early" is in orange, and "Educator" is in orange. Below this, the words "TRAINING CENTER" are written in a smaller, purple, sans-serif font. To the right of the text is a purple silhouette of a family: a man holding a baby, a woman, and a small child.

**SEIU**Early  
**Educator**  
TRAINING CENTER

# SEIU Curricula



## TALLER DE SALUD & SEGURIDAD LABORAL

**PROVEEDORES  
DE CUIDADO INFANTIL FAMILIAR**

**Guía para la Colega Educadora**



La asistencia técnica para este plan de estudios fue proporcionada por la División de Salud laboral del Departamento de Salud Pública de CA



## OCCUPATIONAL HEALTH & SAFETY TRAINING


CENTER-BASED EARLY CARE & EDUCATION WORKERS

Peer Educator Training Guide



Technical assistance to this curriculum provided by the Occupational Health Branch of the CA Department of Public Health

# Project Activities




**INTRODUCTION:**  
IDENTIFYING WORK-RELATED HAZARDS

**TRAINING OBJECTIVE FOR THIS SECTION:**

<b>PARTICIPANTS WILL BE ABLE TO:</b>	<b>MATERIALS NEEDED:</b>
<ul style="list-style-type: none"><li>• Define "hazards"</li><li>• Describe four types of hazards in school and center-based child care facilities: biological hazards; toxic chemicals; physical and safety hazards; and stress</li></ul>	<ul style="list-style-type: none"><li>• Family Feud Game Board/Chart</li><li>• Bus Stop Chart</li><li>• Tape</li><li>• Sheets of paper to cover the answers on the Game Board</li><li>• Buzzers or bells</li></ul>

**PEER EDUCATOR RESOURCES:**  
Major Worker Health Hazards for Child Care (Appendix B of Caring for Our Children resource, <http://nrickids.org/CFOC>)

 **Time: 15 Minutes**

- ▶ Needs assessment
- ▶ Revision of SEIU's center and school-based curricula
- ▶ Pilot testing & revisions
- ▶ TOTs
- ▶ TOT follow up

# Needs Assessment – 2018

- ▶ Health and safety training and resources focused on children, not workers
- ▶ Focus on OSH varied employer to employer, often not a focus or not systematic.
- ▶ Training or resources ad hoc in nature
- ▶ Limited opportunities for childcare workers to receive OSH info
- ▶ Challenges for training
  - ▶ Focus on children
  - ▶ Time
  - ▶ Workload & competing priorities (training & in classroom)
  - ▶ Employer awareness
  - ▶ Need - OSH training programs
  - ▶ Language needs



# Modules

**Introduction:** Identifying work-related hazards

**Section 1:** Injury prevention

**Section 2:** Illness prevention

**Section 3:** Use of toxic chemicals and alternatives

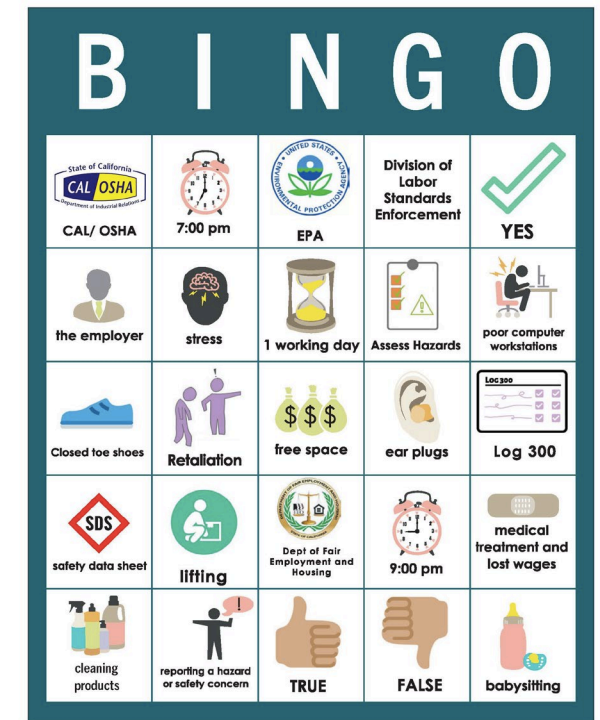
**Section 4:** Reducing and preventing stress

**\*Section 5:** Aggressive behavior in young children (optional)

**\*Section 6:** Workers' rights and responsibilities

Time: 2.5 hours (including optional module)

BINGO GAMEBOARD #1



# Pilot training

- ▶ November 2018 in Oakland – English
  - ▶ 8 participants
- ▶ December 2018 in LA - Spanish
  - ▶ 6 participants

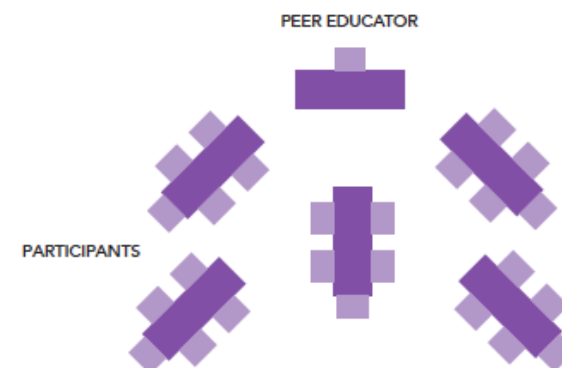
## WORKSHOP AGENDA

Welcome and Overview	20 min
Introduction to Work-Related Hazards	15 min
Section 1: Injury Prevention	15 min
Section 2: Illness Prevention	20 min
Break	5 min
Section 3: Use of Toxic Chemicals and Alternatives	20 min
Section 4: Reducing and Preventing Stress	15 min
Section 5: Aggressive Behaviors in Young Children (optional)	10 min
Section 6: Workers' Rights and Responsibilities	15 min
Closing and Evaluation	15 min

Total time: 2 hrs 20 min (2 hrs 30 min with optional section)

## SETTING UP THE ROOM

This training contains several group activities. It is recommended that the tables are placed to promote active discussion and collaboration so that participants can work in small groups (see diagram below).





# Clear need & resonance with child care workers

- ▶ Participants found the topics novel, important, useful
  - ▶ Plans to rearrange diaper changing station
- ▶ Enthusiastic participation, positive response to interactive nature
- ▶ Health and safety of workers, not of children – reminders during training
- ▶ Appreciated all topics, especially **workers' rights**
  - ▶ Did not realize Cal/OSHA applied to them
  - ▶ Length of training & volume of content

# Revisions to Curriculum

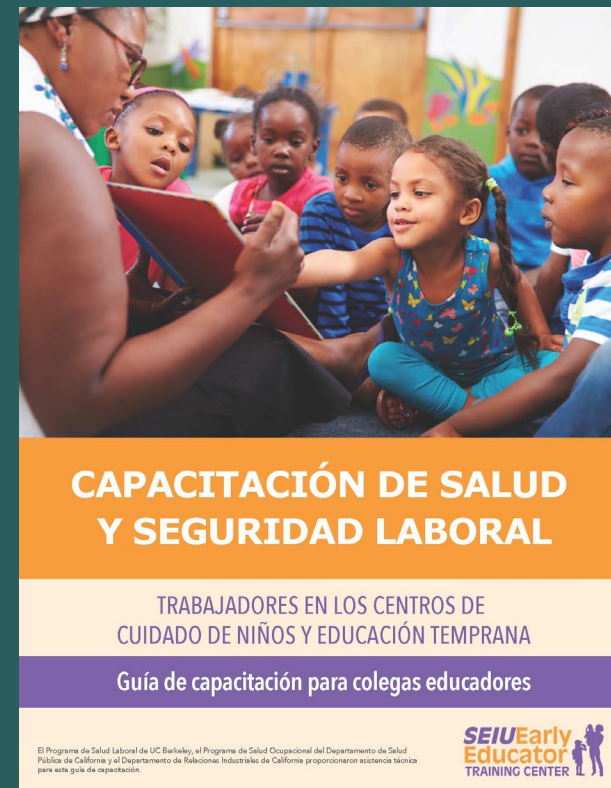
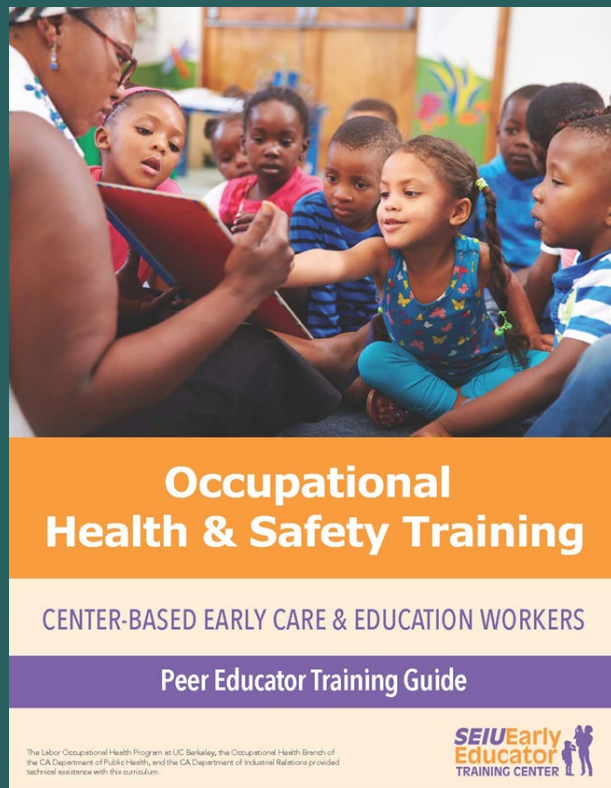
- ▶ Revised activities & props (e.g., used dolls for lifting practice, not boxes) based on pilot participant feedback
- ▶ Organization, language, & formatting of scripts & instructions
- ▶ Images
- ▶ Evaluation form

# TOTs

- ▶ Day long
  - ▶ English language - May 2019 in Oakland, 9 participants
  - ▶ Spanish language - July 2019 in LA, 8 participants
- ▶ Need and enthusiasm for training strong
- ▶ Experience & existing capacities
- ▶ Follow up TA session July 2019 in Oakland

# Final curricula & updates

- ▶ Links soon to be posted on CHSWC website!



# Thank you!

- ▶ DIR – Eduardo Enz, Nabeela Khan, Irina Nemirovsky, Jeanne-Mairie Duval, Brandon Hart, Erika Monterroza
- ▶ SEIU – Lladira Baez, Alexa Frankenburg, Karla Gutierrez
- ▶ Designer – Anoki Casey
- ▶ LOHP – Helen Chen, Robin Dewey, Emely Heras, Rosa Martinez, Laura Stock, Suzanne Teran