

DEPARTMENT OF INDUSTRIAL RELATIONS
Office of the Director – Research Unit
455 Golden Gate Avenue, 9th Floor
San Francisco, CA 94102

ADDRESS REPLY TO:

San Francisco P.O. Box 420603
CA 94142-0603



SCOPE OF WORK PROVISION

FOR

**SHEET METAL WORKER:
METAL DECK AND SIDING**

IN

ALPINE, CALAVERAS, COLUSA, FRESNO, GLENN, KINGS,
LASSEN, MADERA, MERCED, MODOC, NEVADA, PLACER,
PLUMAS, SACRAMENTO, SAN JOAQUIN, SHASTA, SIERRA,
SISKIYOU, STANISLAUS, SUTTER, TEHAMA, TUOLUMNE, AND
YOLO COUNTIES.

DEPARTMENT OF INDUSTRIAL RELATIONS

Division of Labor Statistics and Research
455 Golden Gate Avenue, 9th Floor
San Francisco, CA 94102

MAILING ADDRESS:

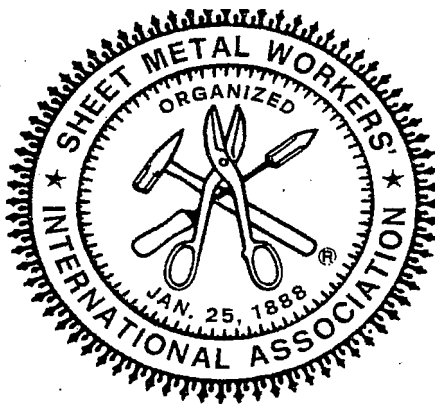
P. O. Box 420603
San Francisco, CA 94142-0603



February 22, 2007

ADVISORY SCOPE OF WORK

Please note that this advisory scope of work does not apply for metal roofing systems work in the counties where we have issued prevailing wage rates for the Metal Roofing Systems Installer. Please refer to the statewide general prevailing wage determinations for the Metal Roofing Systems Installer on pages 2J to 2J-15.



RECEIVED
Department of Industrial Relations

AUG 02 2010

Div. of Labor Statistics & Research
Chief's Office

UNION AGREEMENT

BETWEEN

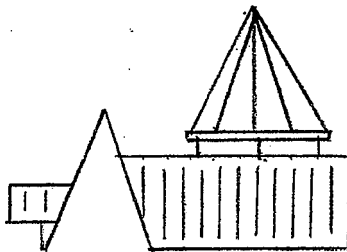
SHEET METAL WORKERS' INTERNATIONAL

ASSOCIATION LOCAL UNION NO. 104 & 162

AND

**METAL DECK AND SIDING CONTRACTORS ASSOCIATION
OF NORTHERN CALIFORNIA**

JULY 1, 2010 to JUNE 30, 2013



Sheet Metal Workers' International Association Local Union No. 104
2610 Crow Canyon Road, Suite 300
San Ramon, CA 94583-1547
(925) 314-8600

Sheet Metal Workers' International Association Local Union No. 162
2840 El Centro Road, Suite 110
Sacramento, CA 95833
(916) 922-1133

SECTION 2. Work covered by this Agreement shall include the handling and installation of all types of metal deck, metal roof deck, metal roofing, metal siding and metal buildings. Metal roofing shall be limited to factory manufactures, catalog listed, metal roof systems only.