

DEPARTMENT OF INDUSTRIAL RELATIONS
Office of the Director – Research Unit
455 Golden Gate Avenue, 9th Floor
San Francisco, CA 94102

ADDRESS REPLY TO:

San Francisco P.O. Box 420603
CA 94142-0603



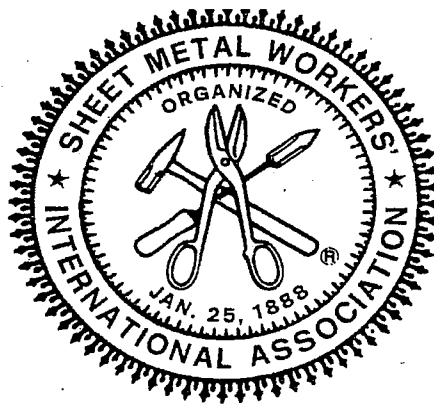
HOLIDAY PROVISION

FOR

SHEET METAL WORKER: METAL DECK AND SIDING

IN

ALPINE, CALAVERAS, COLUSA, FRESNO, GLENN, KINGS,
LASSEN, MADERA, MERCED, MODOC, NEVADA, PLACER,
PLUMAS, SACRAMENTO, SAN JOAQUIN, SHASTA, SIERRA,
SISKIYOU, STANISLAUS, SUTTER, TEHAMA, TUOLUMNE, AND
YOLO COUNTIES.



RECEIVED
Department of Industrial Relations

AUG 02 2010

Div. of Labor Statistics & Research
Chief's Office

UNION AGREEMENT

BETWEEN

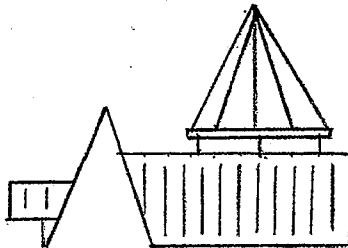
SHEET METAL WORKERS' INTERNATIONAL

ASSOCIATION LOCAL UNION NO. 104 & 162

AND

**METAL DECK AND SIDING CONTRACTORS ASSOCIATION
OF NORTHERN CALIFORNIA**

JULY 1, 2010 to JUNE 30, 2013



**Sheet Metal Workers' International Association Local Union No. 104
2610 Crow Canyon Road, Suite 300
San Ramon, CA 94583-1547
(925) 314-8600**

**Sheet Metal Workers' International Association Local Union No. 162
2840 El Centro Road, Suite 110
Sacramento, CA 95833
(916) 922-1133**

SECTION 3. Holidays: New Year's Day, Presidents Day, Memorial Day, Independence Day, Labor Day, Thanksgiving Day, the Friday following Thanksgiving Day, Christmas Day and Sundays shall be recognized as holidays. All work performed on holidays shall be paid at two (2) times the gross taxable hourly wage rate. All fringe contributions with the exception of vacation pay and Local 104 supplemental pension (see Article X, Section 6), shall be paid at the regular hourly rate. Vacation pay contributions shall be paid at two (2) times the regular hourly rate. The overtime rate for dues check-off is applicable to two (2) times the regular hourly rate but is paid on the fringe contribution report at the regular hourly rate, the extra one (1) times the regular dues check-off rate shall be added to the employee's base wage. Holidays shall be observed on the date of the occurrence, except that holidays which fall on Sunday shall be observed the following Monday.