

DEPARTMENT OF INDUSTRIAL RELATIONS  
Office of the Director – Research Unit  
455 Golden Gate Avenue, 9<sup>th</sup> Floor  
San Francisco, CA 94102

ADDRESS REPLY TO:

*San Francisco* P.O. Box 420603  
CA 94142-0603



## HOLIDAY PROVISION

FOR

## **SHEET METAL WORKER: METAL DECK AND SIDING**

IN

ALAMEDA, CONTRA COSTA, DEL NORTE, HUMBOLDT, LAKE,  
MARIN, MENDOCINO, MONTEREY, NAPA, SAN BENITO,  
SAN FRANCISCO, SAN MATEO, SANTA CLARA, SANTA CRUZ,  
SOLANO, SONOMA AND TRINITY COUNTIES.



Sheet Metal Workers' Local Union No. 104 Wage and Fringe Schedule

**Metal Deck and Siding**

All Areas of Local No. 104

July 1, 2011 through June 30, 2012 (Billing Code 111)

A handwritten signature in black ink, appearing to read "Bruce Word".

BRUCE WORD, Business Manager  
Sheet Metal Workers' International Association  
Local Union No. 104

A handwritten signature in black ink, appearing to read "Richard Boyd".

Richard Boyd, Operation Manager  
Anning Johnson

**RECEIVED**  
Department of Industrial Relations

JUL 28 2011

Div. of Labor Statistics & Research  
Chief's Office

**SHEET METAL WORKERS' INTERNATIONAL ASSOCIATION**  
**LOCAL UNION No. 104**  
**MAIN ADMINISTRATION OFFICE**

---

PHONE (925) 314-8600

---




---

FAX (925) 314-8620

---

**DISTRICT OFFICES**

SAN FRANCISCO  
 1939 Market Street  
 — San Francisco, CA 94013-1085  
 (415) 621-2930

ALAMEDA-CONTRA COSTA  
 COUNTIES  
 X 1720 Marina Boulevard  
 — San Leandro, CA 94577-4203  
 (510) 895-8660

SAN MATEO COUNTY  
 858 Hinckley Road  
 — Burlingame, CA 94010-1503  
 (650) 697-0664

LAKE, MARIN, MENDOCINO,  
 NAPA, SOLANO, SONOMA  
 COUNTIES  
 — 610 E. Washington, Suite C  
 Petaluma, CA 94952-5916  
 (707) 763-6676

DEL NORTE, HUMBOLDT,  
 TRINITY COUNTIES  
 — 9th & E Streets  
 Eureka, CA 95501-0430  
 (707) 443-8158

SANTA CLARA COUNTY  
 370 Umbarger Road  
 — San Jose, CA 95111-0033  
 (408) 225-3939

MONTEREY-SANTA CRUZ,  
 SAN BENITO COUNTIES  
 — 11060 Commercial Parkway  
 P.O. Box 940  
 Castroville, CA 95012-0940  
 (831) 633-3585

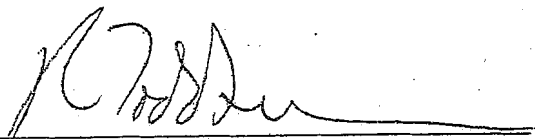
2610 CROW CANYON ROAD, SUITE 300  
 SAN RAMON, CALIFORNIA 94583-1547

**MEMORANDUM OF UNDERSTANDING**


The Union Agreement between Sheet Metal Workers' International Association Local Union No. 104 and No. 162 and the Metal Deck and Siding Contractors expiring June 30, 2004, has been extended through June 30, 2007, by mutual agreement of the parties. All current contract language will remain in effect through June 30, 2007, except for Article X, Section 13, (a) Wage and Fringe Schedule, which will be amended to read as follows:

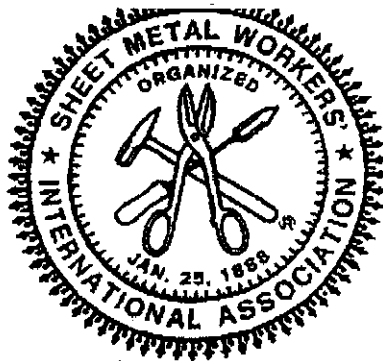
Effective July 1, 2004	\$1.25 per hour increase
Effective July 1, 2005	\$1.50 per hour increase
Effective July 1, 2006	\$2.00 per hour increase

Said wage increase shall be allocated to existing wages or fringe benefits by the employees covered by this Agreement. These amounts are a \$4.75 total hourly package increase for three (3) years.

  
 For ANNING JOHNSON COMPANY

  
 For B.T. MANCINI COMPANY

  
 For SHEET METAL WORKERS'  
 LOCAL UNION NO. 104



**RECEIVED**  
Department of Industrial Relations

AUG 02 2001

Div. of Labor Statistics & Research  
Chief's Office

## **UNION AGREEMENT**

**BETWEEN**

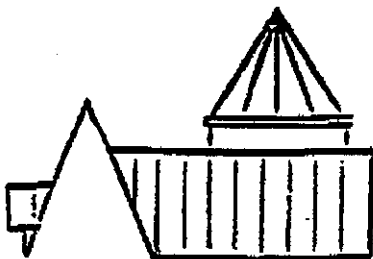
**SHEET METAL WORKERS' INTERNATIONAL**

**ASSOCIATION LOCAL UNION NO. 104 & 162**

**AND**

**METAL DECK AND SIDING CONTRACTORS ASSOCIATION  
OF NORTHERN CALIFORNIA**

**JULY 1, 2001 to JUNE 30, 2004**



**Sheet Metal Workers' International Association Local Union No. 104  
1939 Market Street  
San Francisco, CA 94103  
(415) 621-2930**

**Sheet Metal Workers' International Association Local Union No. 162  
2840 El Centro Road, Suite 110  
Sacramento, CA 95833  
(916) 922-1133**

**SECTION 3. Holidays: New Year's Day, Presidents Day, Memorial Day, Independence Day, Labor Day, Thanksgiving Day, the Friday following Thanksgiving Day, Christmas Day and Sundays shall be recognized as holidays. All work performed on holidays shall be paid at two (2) times the gross taxable hourly wage rate. All fringe contributions with the exception of vacation pay, shall be paid at the regular hourly rate. Vacation pay contributions shall be paid at two (2) times the regular hourly rate. The overtime rate for dues check-off is applicable to two (2) times the regular hourly rate but is paid on the fringe contribution report at the regular hourly rate, the extra one (1) times the regular dues check-off rate shall be added to the employees base wage. Holidays shall be observed on the date of the occurrence, except that holidays which fall on Sunday shall be observed the following Monday.**