

DEPARTMENT OF INDUSTRIAL RELATIONS

Office of the Director – Research Unit

455 Golden Gate Avenue, 9<sup>th</sup> Floor  
San Francisco, CA 94102

ADDRESS REPLY TO:

*San Francisco* P.O. Box 420603  
CA 94142-0603



TRAVEL AND SUBSISTENCE PROVISIONS

FOR

**PLUMBER:**

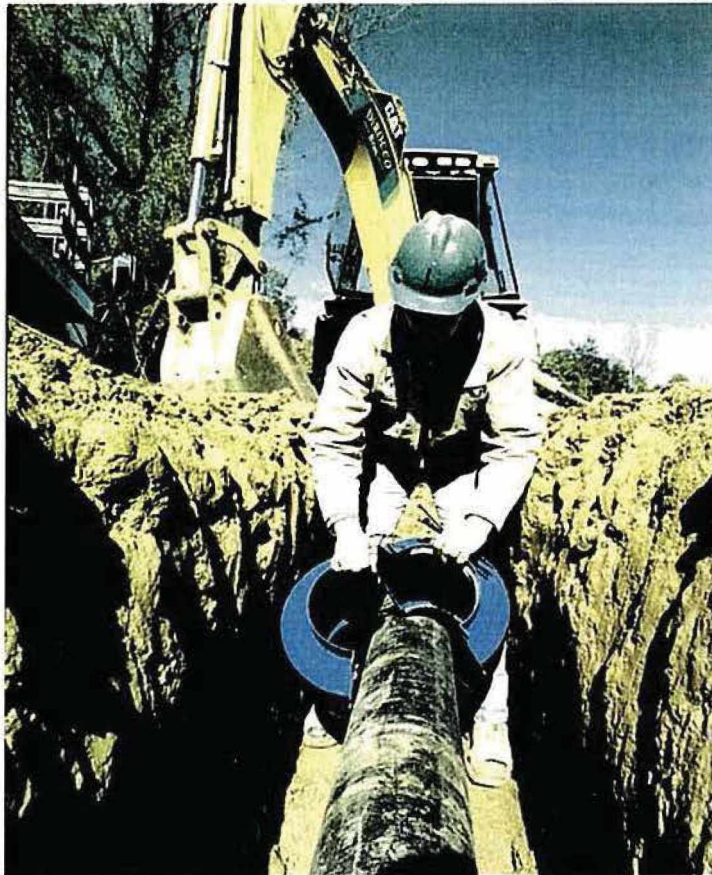
UNDERGROUND UTILITY PIPEFITTER  
UNDERGROUND UTILITY ASSISTANT JOURNEYMAN  
UNDERGROUND UTILITY TRADESMAN

IN

ALAMEDA, ALPINE, AMADOR, BUTTE, CALAVERAS, COLUSA, CONTRA  
COSTA, DEL NORTE, EL DORADO, FRESNO, GLENN, HUMBOLDT, KINGS,  
LASSEN, MADERA, MARIPOSA, MERCED, MODOC, MONTEREY, NAPA,  
NEVADA, PLACER, PLUMAS, SACRAMENTO, SAN BENITO, SAN JOAQUIN,  
SAN MATEO, SANTA CLARA, SANTA CRUZ, SHASTA, SIERRA, SISKIYOU,  
SOLANO, STANISLAUS, SUTTER, TEHAMA, TRINITY, TULARE,  
TUOLUMNE, YOLO, AND YUBA COUNTIES

July 1, 2014 = June 30, 2017

# **U.A. LOCAL 355**



## **UNDERGROUND UTILITY AGREEMENT COVERING NORTHERN CALIFORNIA AND NORTHERN NEVADA**

105. Employees required to report to jobs which are fifty (50) or more miles by the shortest and most direct regularly traveled route from the main office or field office of the Individual Employer, shall receive one-half ( $\frac{1}{2}$ ) of their traveling time, at each man's specified wage rate, both to and from the job. This shall only apply to employees who are regularly employed by the Individual Employer.
106. When an employee is required to remain away from home overnight, the Individual Employer will provide lodging plus twenty dollars (\$20.00) for ordinary and necessary expenses for each night the employee is required to remain away from home. This shall only apply to employees who are regularly employed by the Individual Employer.

DEPARTMENT OF INDUSTRIAL RELATIONS

Office of the Director – Research Unit

455 Golden Gate Avenue, 9<sup>th</sup> Floor  
San Francisco, CA 94102

ADDRESS REPLY TO:

*San Francisco* P.O. Box 420603  
CA 94142-0603



TRAVEL AND SUBSISTENCE PROVISIONS

FOR

**PLUMBER:**

LANDSCAPE PIPEFITTER

LANDSCAPE ASSISTANT JOURNEYMAN

LANDSCAPE TRADESMAN I & II

IN

ALAMEDA, ALPINE, AMADOR, BUTTE, CALAVERAS, COLUSA, CONTRA  
COSTA, DEL NORTE, EL DORADO, FRESNO, GLENN, HUMBOLDT, KINGS,  
LASSEN, MADERA, MARIPOSA, MERCED, MODOC, MONTEREY, NAPA,  
NEVADA, PLACER, PLUMAS, SACRAMENTO, SAN BENITO, SAN JOAQUIN,  
SAN MATEO, SANTA CLARA, SANTA CRUZ, SHASTA, SIERRA, SISKIYOU,  
SOLANO, STANISLAUS, SUTTER, TEHAMA, TRINITY, TULARE,  
TUOLUMNE, YOLO, AND YUBA COUNTIES



July 1, 2014 - June 30, 2017

# **U.A. Local 355 Landscape Agreement for Northern California and Northern Nevada**



104. Employees required to report to a job which is fifty (50) or more miles by the shortest and most direct regularly traveled route from the main office or field office of the Individual Employer, shall receive one-half ( $\frac{1}{2}$ ) of their traveling time, at each man's specified wage rate, both to and from the job.
105. When an employee is required to remain away from home overnight, the Individual Employer will provide lodging, ordinary and necessary expenses for each night the employee is required to remain away from home.